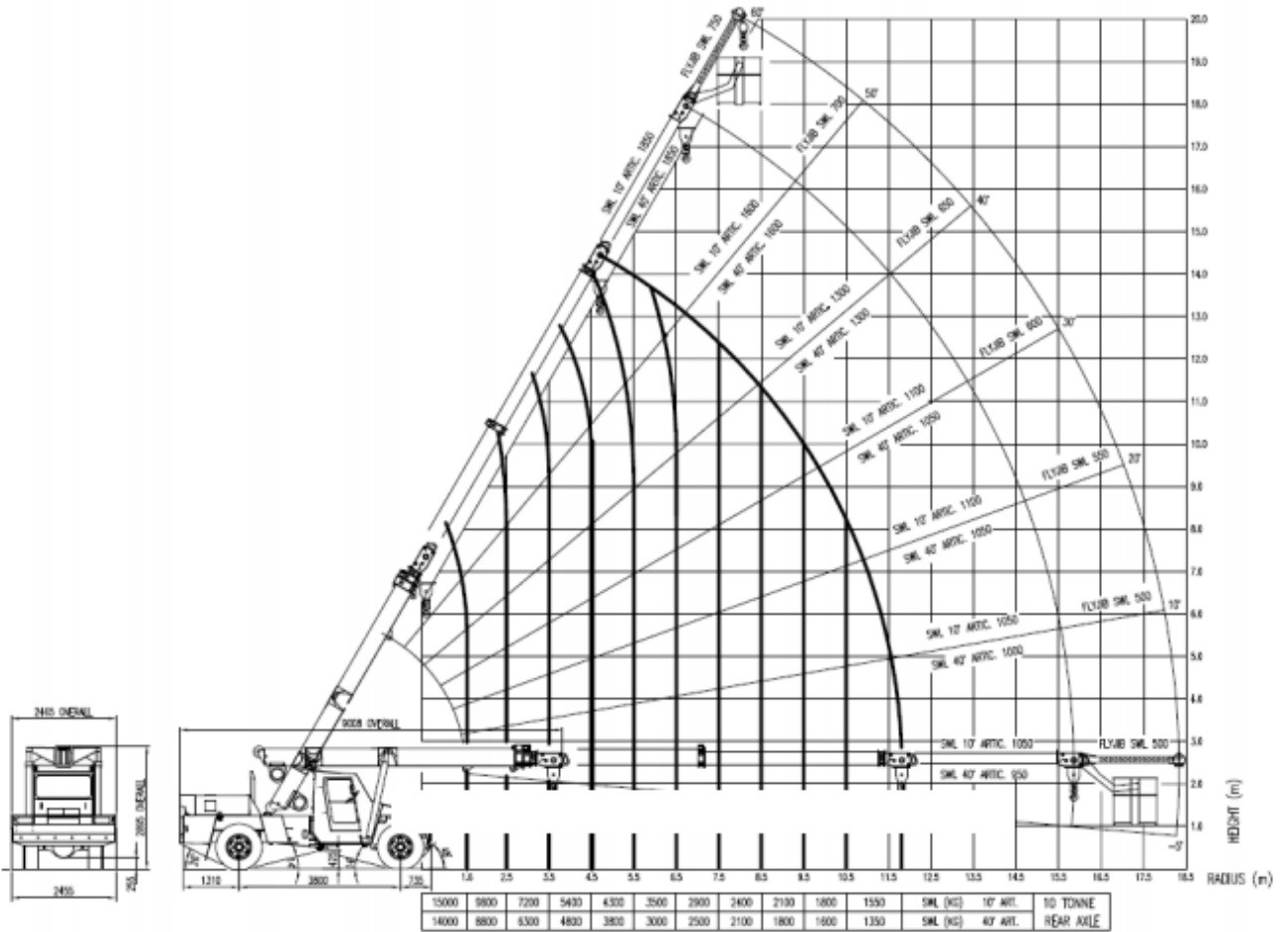
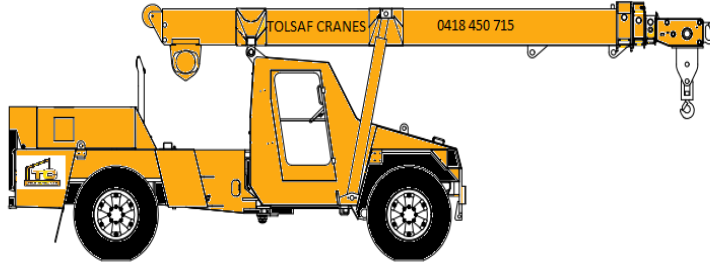




P: Craig 0418 450 715
 For accounts please call Nicola
 P: 0438 347 930
 POSTAL ADDRESS:
 PO BOX 94
 East Maitland 2323
 E: admin@tolsafcranes.com.au
 www.tolsafcranes.com.au
 ABRN: 32 091 595 512

16 Tonne Franna





P: Craig 0418 450 715
 For accounts please call Nicola
 P: 0438 347 930
 POSTAL ADDRESS:
 PO BOX 94
 East Maitland 2323
 E: admin@tolsafcranes.com.au
 www.tolsafcranes.com.au
 AEN: 30 DRI 595 512

Winch Safe Working Loads

- Single Part 3.25 Tonnes
- Two Parts 6.5 Tonnes
- Three Parts 9.5 Tonnes

SAFE WORKING LOAD IN TONNES AT 67% TIPPING
RADIUS IN METERS

BOOM ANGLE	HOOK BLOCK – MANUAL EXTENSION RETRACTED																		4.1m MAN. EXT.
	5.65	6.00	6.50	7.00	7.50	8.00	8.50	9.00	9.50	10.0	10.5	11.0	11.5	12.0	12.5	13.0	13.5	13.8	
60°			9.75	9.75	9.75	9.75	9.75	9.75	9.75	9.75	9.30	8.50	7.80	7.20	6.60	6.20	5.80	5.50	17.9
			1.09	1.35	1.60	1.80	2.05	2.30	2.55	2.80	3.05	3.30	3.55	3.80	4.05	4.30	4.55	4.75	2.65
50°	9.75	9.75	9.75	9.75	9.75	9.75	8.90	8.10	7.30	6.75	6.20	5.70	5.30	4.90	4.60	4.30	4.10	3.90	6.80
	1.45	1.75	2.00	2.35	2.65	3.00	3.30	3.60	3.95	4.25	4.60	4.90	5.25	5.50	5.85	6.20	6.50	6.75	2.30
40°	9.75	9.75	9.75	9.30	8.20	7.40	6.60	6.00	5.50	5.10	4.70	4.30	4.00	3.80	3.50	3.30	3.10	3.00	9.35
	2.15	2.45	2.80	3.20	3.60	3.95	4.35	4.75	5.10	5.50	5.85	6.25	6.65	7.00	7.40	7.80	8.20	8.45	1.95
30°	9.75	9.75	8.60	7.60	6.75	6.00	5.40	5.00	4.50	4.20	3.85	3.60	3.30	3.10	2.95	2.70	2.60	2.50	11.5
	2.75	3.00	3.45	3.90	4.30	4.75	5.20	5.60	6.05	6.50	6.95	7.35	7.80	8.25	8.65	9.10	9.50	9.80	1.75
20°	9.60	8.60	7.50	6.60	5.90	5.30	4.80	4.40	4.00	3.70	3.40	3.10	2.90	2.70	2.60	2.40	2.20	2.10	13.3
	3.15	3.48	3.95	4.40	4.90	5.35	5.80	6.30	6.75	7.25	7.70	8.15	8.65	9.10	9.60	10.0	10.5	10.8	1.50
10°	8.90	8.00	6.90	6.10	5.50	4.90	4.40	4.10	3.70	3.40	3.20	2.90	2.70	2.50	2.40	2.20	2.10	2.00	14.7
	3.40	3.75	4.25	4.70	5.20	5.70	6.20	6.70	7.20	7.65	8.20	8.65	9.15	9.65	10.2	10.6	11.1	11.4	1.40
0°	8.60	7.80	6.80	6.00	5.30	4.80	4.30	4.00	3.60	3.30	3.10	2.90	2.70	2.50	2.30	2.20	2.00	1.90	15.5
	3.50	3.85	4.35	4.85	5.35	5.85	6.35	6.85	7.35	7.85	8.35	8.85	9.35	9.85	10.3	10.8	11.3	11.7	1.40
																			15.8

BOOM ANGLE	BOOM PIVOT TO LUG – 1 ST BOOM EXTENSION MANUAL EXTENSION RETRACTED										
	4.15	4.50	5.00	5.50	6.00	6.50	7.00	7.50	8.00	8.25	
60°							12.0	12.0	12.0	12.0	
							1.05	1.30	1.55	1.80	
50°			12.6	12.6	12.6	12.60	12.0	10.3	9.00	8.45	
			1.05	1.35	1.70	2.00	2.35	2.65	3.00	3.15	
40°	13.1	13.1	13.1	13.1	11.6	9.80	8.40	7.30	6.50	6.10	
	1.00	1.30	1.65	2.05	2.45	2.80	3.20	3.55	3.95	4.15	
30°	13.5	13.5	13.5	11.0	9.1	7.80	6.70	5.90	5.20	4.90	
	1.45	1.75	2.15	2.60	3.00	3.45	3.90	4.30	4.75	5.00	
20°	13.8	13.8	11.4	9.40	7.90	6.70	5.80	5.10	4.50	4.20	
	1.70	2.05	2.55	3.00	3.45	3.95	4.40	4.85	5.35	5.60	
10°	13.9	13.0	10.4	8.60	7.20	6.20	5.30	4.70	4.10	3.90	
	1.90	2.25	2.75	3.25	3.75	4.25	4.70	5.20	5.70	5.95	
0°	14.0	12.6	10.1	8.30	7.00	6.00	5.20	4.50	4.00	3.80	
	2.00	2.35	2.85	3.35	3.85	4.35	4.85	5.35	5.85	6.10	

FIXED HOOK ON MAIN BOOM	
ANGLE IN DEGREES	CAPACITY IN TONNES
60°	
50°	
40°	
30°	16
20°	16
10°	16
0°	16